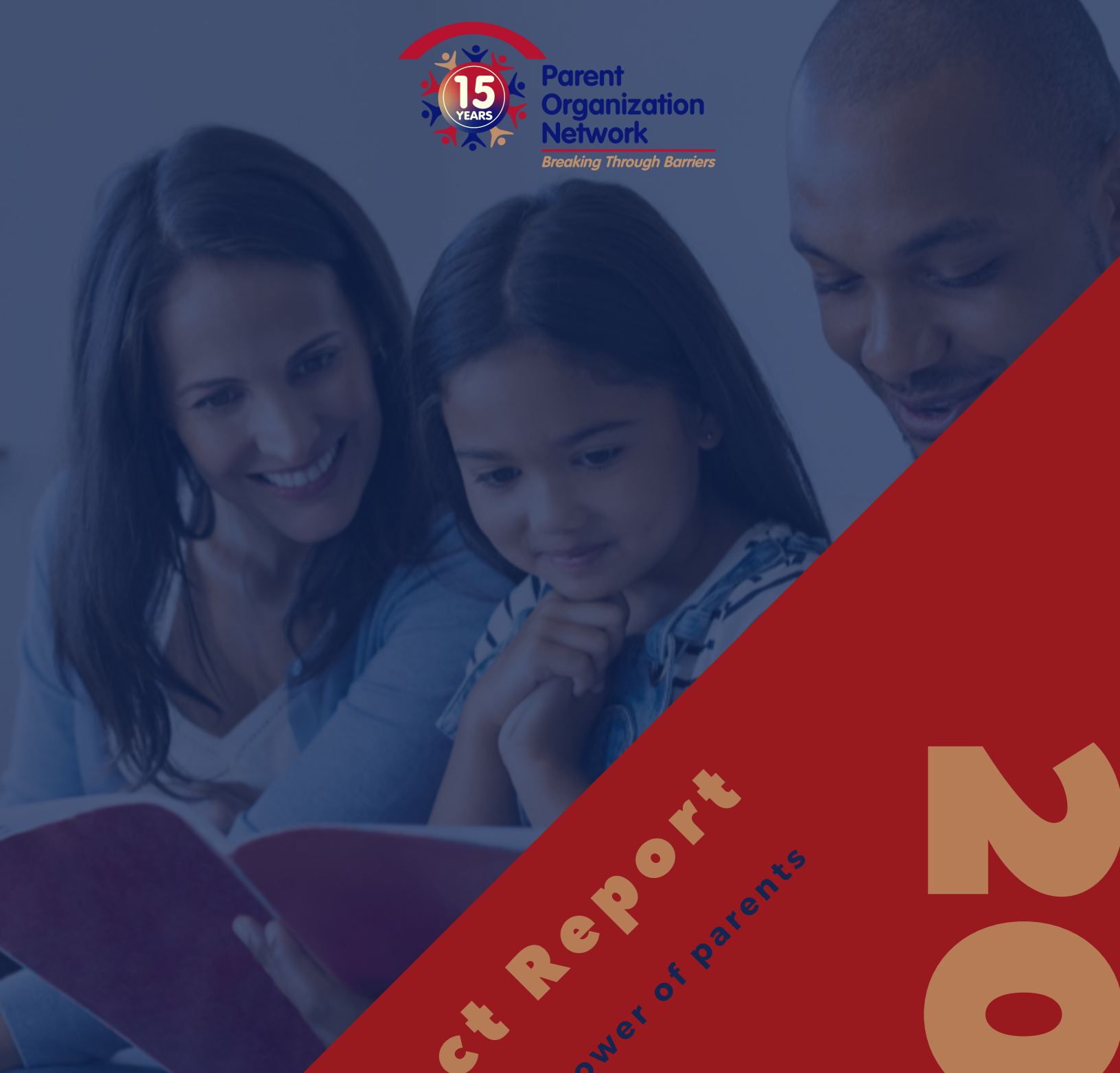




Parent
Organization
Network

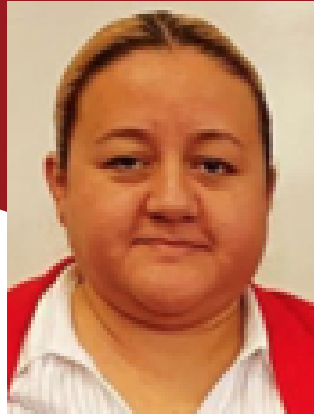
Breaking Through Barriers



Impact Report

We believe in the power of parents

2020



"I have been active in my children's schools for over 8 years. Despite being involved, my children became long-term English learners.

Thanks to PON, in a very short time I have managed to understand the reclassification process and the rights that I have as a parent. PON has given me security and above all real knowledge on how to support my children."

Yosadara Carbajal-Salmeron

Parent Leader from Padres Unidos de Pomona, a Gente Organizada program

To unite the power of underserved parents* to break through barriers in public education so parents and educators can effectively partner to ensure equity and excellence for all students.

*PON defines "parent" broadly to include birth, adoptive, foster parents, and legal guardians, as well as grandparents, adult siblings, aunts and uncles, and other relatives and non-relatives who are involved with raising and educating a child.

DIRECTOR'S MESSAGE

Dear members and partners:

This was a very difficult and painful year for so many families and organizations because of the coronavirus. At the same time, the pandemic and distance learning highlighted the critical role of family-school partnerships to support student success.

I am grateful for all PON was able to achieve in 2020 including celebrating its 15th anniversary and helping build momentum to prioritize culturally responsive family engagement in schools.

We can hardly wait to reunite with you, break bread, and reach many more students and families when it is safe.

Most of all, we are hopeful that our country will come back to health this year and begin an open process to address injustices in our society and systems. This will be a long journey but together we shall overcome and be stronger for it.

In solidarity,

Araceli Simeón



KEY OUTCOMES FOR 2020

1. Advanced the dialogue on family engagement at the state level through research and policy strategies;
2. Collected data and developed resources for parents and organizations supporting families; and
3. Strengthened our communications, hired our first Community Organizer; and developed our 2021-2023 Strategic Plan.



Engaged
155 parents
and 96 youth



Collaborated with
20 organizations

PROGRAM HIGHLIGHTS

DATA, RESEARCH, AND ADVOCACY

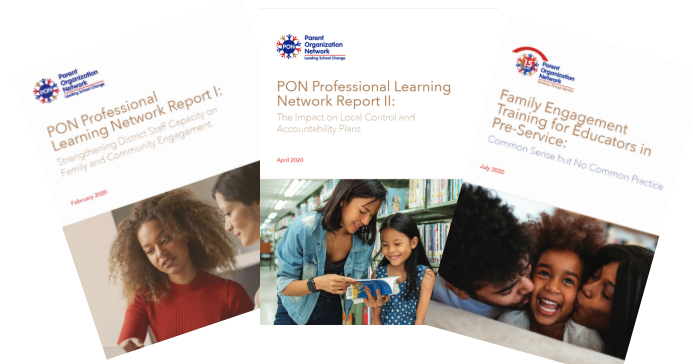


INPUTS

- Collected data to better inform policy priorities. We actively engaged:
 - 179 parents and youth in focus groups, online surveys, and data discussions.
 - 38 partners including educators, professors, nonprofits, and policy makers
- Analyzed data collectively with others to draft reports, letters and testimonials.

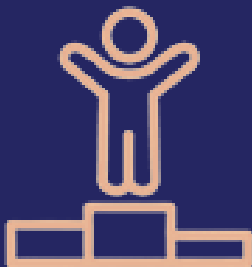
OUTPUTS

- Released three studies with recommendations for school staff and future educators on how they can strengthen family engagement.
- Used research findings to advocate for change before key state agencies including the California Department of Education, California Commission on Teacher Credentialing and the California Collaborative for Educational Excellence.



- Provided input to three school districts' distance learning plans making them equitable for all students.
- Advocated before city, county, state, and federal agencies to improve distance learning and close the digital divide .

IMPACT: INFLUENCED DECISIONS



- As a result of PON's efforts, the California Commission on Teacher Credentialing (CTC) is prioritizing family engagement in their upcoming five-year strategic plan. This means requirements will be updated so that future teachers receive training to engage all families.
- The California Department of Education (CDE) established a new Family Engagement Division. This means families now have champions within the department to uplift their concerns and explore ways to strengthen the practice of effective family engagement in schools.

PROGRAM HIGHLIGHTS

CAPACITY BUILDING OF PARENTS

INPUTS

PON's Capacity Building Committee this year developed a learning series to support parent leaders and staff from member organizations. The community leaders facilitated discussions and provided resources and support to families on topics related to the pandemic. The five workshops included:

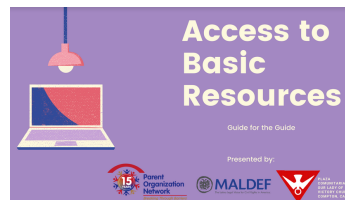
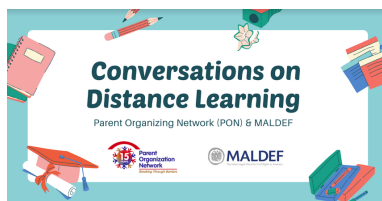
1. Distance Learning
2. Basic Services
3. Mental Health
4. Peer-Led Mental Health Support Groups in Spanish
5. Decoding Dyslexia



OUTPUTS

- 78 members participated in the sessions, with 30% benefiting from multiple sessions.
- All resources are available on the PON website so that any parent can access the information.

These sessions will continue in 2021.



OTHER HIGHLIGHTS:

Building School Administrators' Capacity to Work with Families

PON was subcontracted by California State PTA as one of five consultants to develop a curriculum on family engagement for school administrators. The 7-session curriculum leverages requirements to include families in school planning and budgeting. The program will be piloted in 2021.



LAUSD expanded training on relationship building and conflict resolution to include principals. This training was developed with staff, parents and PON to equip local district administrators with the skills to mediate conflict between principals and parents. After receiving the training, administrators determined it would be most effective to directly train principals.

ORGANIZATIONAL DEVELOPMENT HIGHLIGHTS

INPUTS

In 2020, members and staff reflected, planned, and celebrated key milestones.

About 25 members committed to and actively engaged in activities that sought their input on how to make them and PON stronger and more impactful.

These activities included a retreat, surveys, interviews, and committee meetings.



OUTPUTS

- Updated organizational statements
- Outlined PON's theory of action
- Developed a new 2021-2023 Strategic Plan with three directional priorities:
 1. Advance the practice of effective family engagement.
 2. Continue to develop PON members and the network, increasing engagement and diversity.
 3. Expand our organizational capacity to deepen and broaden our work.

For a copy of the strategic plan and more information about PON, please visit our website at: <https://www.parentnetwork-la.org/>



Increased Organizational Capacity

- From 1 to 2 Full Time Employees
- 12 Consultants
- 2 Pro-bono volunteers
- 1 Summer intern

OTHER HIGHLIGHTS

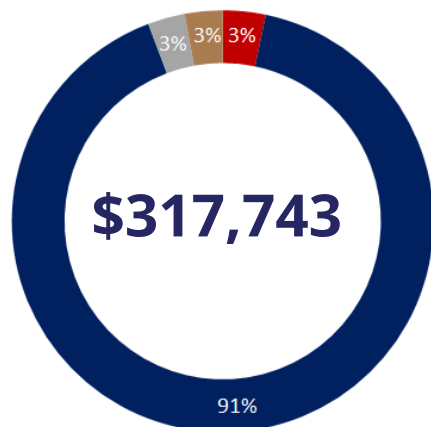


Improved Visibility & Communications

- Updated PON logo and website
- Shared bi-monthly e-newsletters with over 300 members and partners
- Continued to be a driving force to unite the power of parents to break through barriers in public education

2020 FINANCIALS

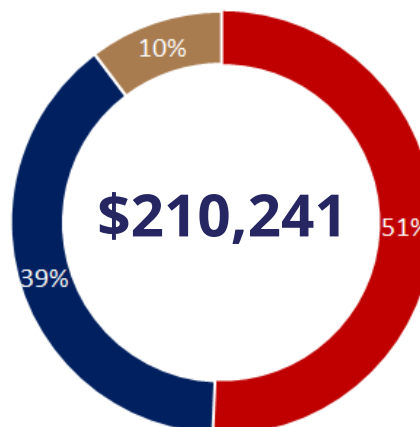
INCOME



- Individual Contributions
- Foundation Grants
- Service Fee Revenue
- In-Kind Revenue

In 2020, PON raised over \$300,000 with 91% of the revenue coming from six foundations. Grants ranged from \$2,500 to \$76,840. Other funding sources included fee for service contracts, funds transferred from one fiscal sponsor to another, and in-kind revenue. The latter includes rent for office space.

EXPENSES



- Personnel
- Operating Costs
- Fiscal Sponsor Fees

In 2020, PON spent over \$200,000 of the revenue raised. Half of the funding paid for personnel and ten percent paid for fiscal sponsorship fees. The remaining 39% paid for operating cost expenses, including:

- Consultants: \$56,263 (27%)
- In-kind expense: \$9,210 (8%)
- Incentives for parents: \$3,648 (1.7%)
- Program Supplies: \$3,252 (1.5%)
- Contributions to members' projects: \$2,050 (1%)

ADVISORY BOARD

All five Advisory Board members have been PON members for 10 years or more and provide collective knowledge and learned experience to the organization. Our thanks and appreciation to:

- Dr. Joyce G. Watts, African American Parent/Community Coalition for Educational Equity (AAP/CCEE) | Co-Chair
- Adrian Sandoval, MALDEF | Co-Chair
- Olga Gonzalez, Parent/Community Leader | Treasurer
- Nancy Villareal, Los Angeles Education Partnership | Secretary
- Carolina Perez, Parent/Community Leader | Member

PON is a fiscally-sponsored project of Community Partners. The Advisory Board oversees PON activities and the Community Partners Board of Directors provides ultimate direction.

THE POWERS OF NETWORKS



"There is no doubt that collaboration is key to achieving excellent work together.

In 2020 we managed to connect parents across Southern California, breaking through city and county limits, and managing to merge experiences, skills and abilities that resulted in parent and community leaders' empowerment and activation.

Thank you, PON, for the many years of collaboration with LIA."

Martha Cota

Executive Director of Latinos In Action



WE ARE GRATEFUL
FOR YOUR
CONTINUOUS
SUPPORT



Funders

The Annenberg Foundation
The California Endowment
Consortium for English Learner Success
DesignEDengagement / California State PTA
The Education Trust West
The Stuart Foundation
United Way of Greater Los Angeles

Partners

Public Advocates
Dr. Shulamit Ritblatt
Transformative Inquiry Designs for Effective Schools

Members

African American Parent/Community Coalition for Educational Equity
Asian Americans Advancing Justice - Los Angeles
CARECEN - LA
Concilio de Padres de Highland Park
Gente Organizada
Latinos In Action California
Los Angeles Educational Partnership
Lynwood SOS
MALDEF
Padres Pioneros
PROedu
Watts/Century Latino Organization

THANK YOU!